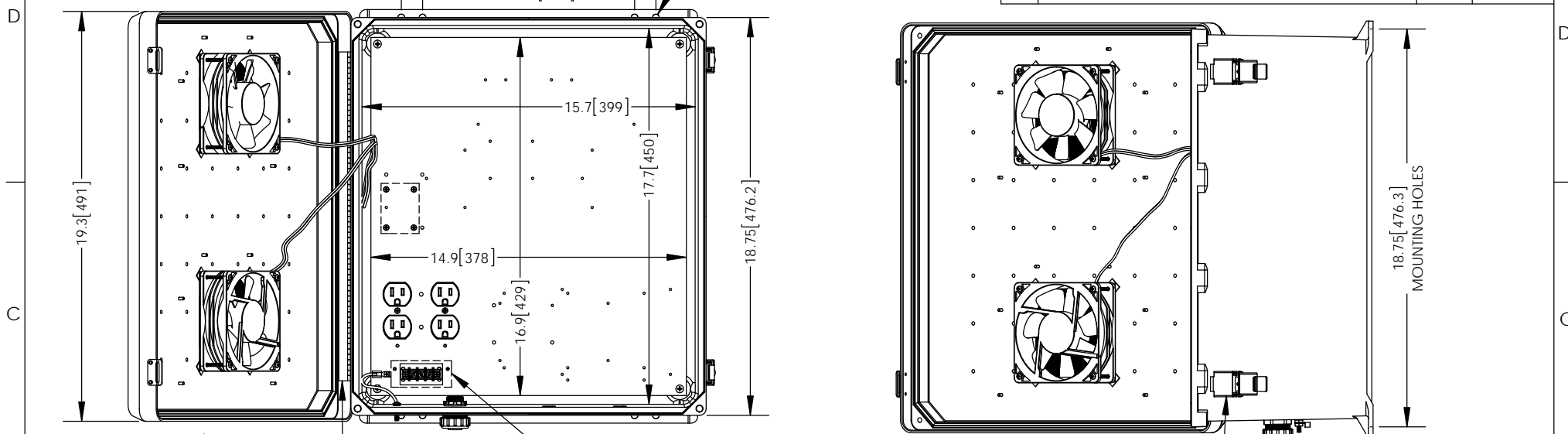


THE INFORMATION CONTAINED IN THIS DRAWING IS THE SOLE
PROPERTY OF L-COM, INC. ANY REPRODUCTION IN PART OR WHOLE
WITHOUT THE WRITTEN PERMISSION OF L-COM, INC. IS PROHIBITED.

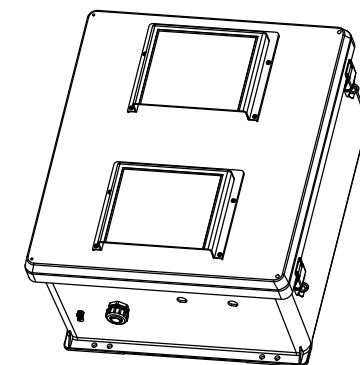
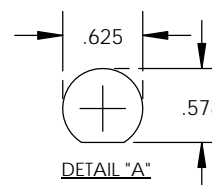
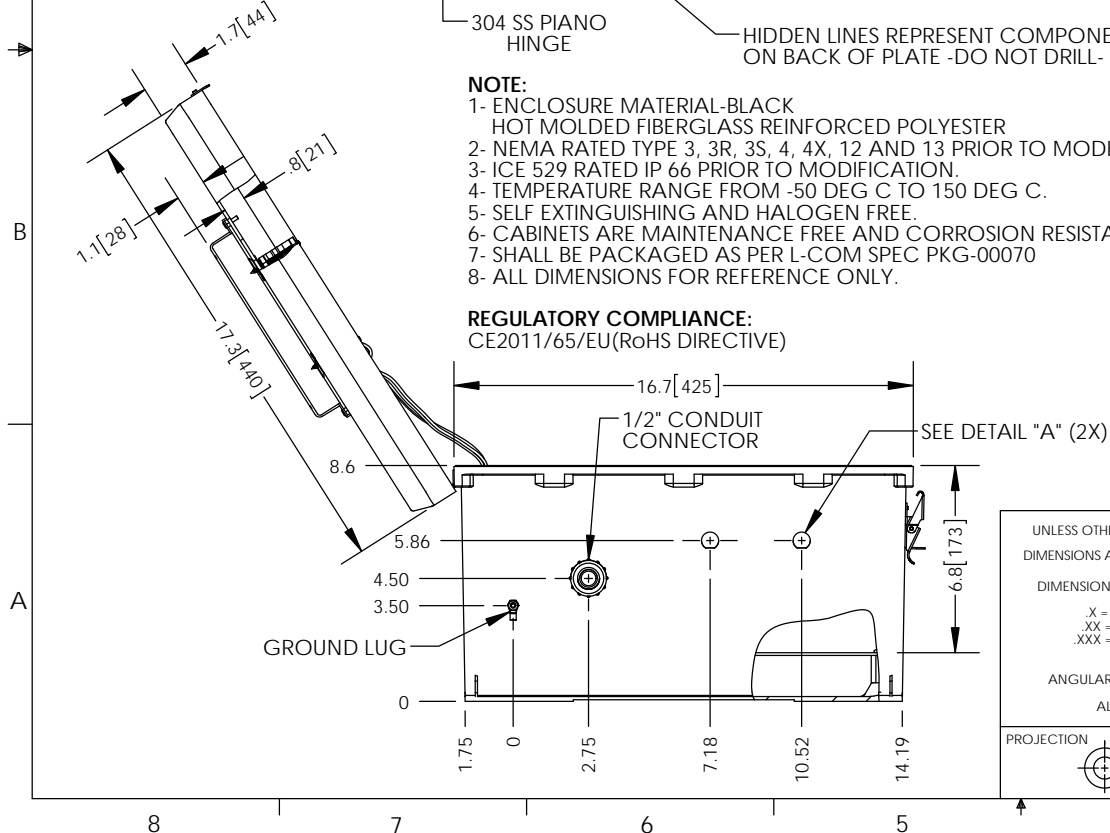
REVISIONS			
REV	DESCRIPTION	DATE	APPROVED
A	INITIAL RELEASE	9/29/15	D.GRIFFIN


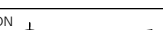


NOTE:

- 1- ENCLOSURE MATERIAL-BLACK
HOT MOLDED FIBERGLASS REINFORCED POLYESTER
- 2- NEMA RATED TYPE 3, 3R, 3S, 4, 4X, 12 AND 13 PRIOR TO MODIFICATIONS.
- 3- ICE 529 RATED IP 66 PRIOR TO MODIFICATION.
- 4- TEMPERATURE RANGE FROM -50 DEG C TO 150 DEG C.
- 5- SELF EXTINGUISHING AND HALOGEN FREE.
- 6- CABINETS ARE MAINTENANCE FREE AND CORROSION RESISTANT.
- 7- SHALL BE PACKAGED AS PER L-COM SPEC PKG-00070
- 8- ALL DIMENSIONS FOR REFERENCE ONLY.

REGULATORY COMPLIANCE:
CE2011/65/EU(ROHS DIRECTIVE)



UNLESS OTHERWISE SPECIFIED, DIMENSIONS ARE IN INCHES [mm] DIMENSIONAL TOLERANCES: $X = \pm 1$ [2.54] $XX = \pm 0.1$ [2.5] $XXX = \pm 0.005$ [0.13] ANGULAR TOLERANCES: $ALL = \pm 1^\circ$	APPROVALS DRAWN BY B. PUCHASKI	DATE 09/15/15			45 BEECHWOOD DRIVE NORTH ANDOVER, MA 01845
	CHECKED BY K. BURGNER	09/15/15	CATEGORY ENCLOSURE		
	APPROVED BY P. PESA	09/15/15	PRODUCT DESCRIPTION NEMA ENCLOSURE 18 X 16 X 8 WEATHERPROOF 120VAC W/ FAN, SOLID STATE CONTROLLER , BLACK		
	CONFIGURATION DETAILS OF UNDIMENSIONED FEATURES MAY VARY		SIZE A	FSCM NO. 43321	DWG. NO. NBB181608-10FS
PROJECTION 	COLOR VARIATIONS MAY OCCUR		SCALE: NONE CAD FILE: NBB181608-10FS.SLDDRW		SHEET 1 OF 1