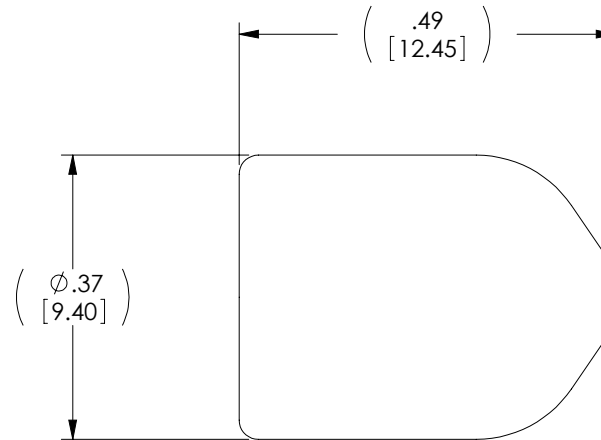
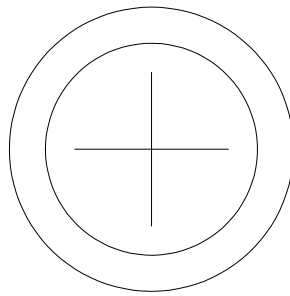



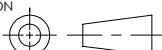
THE INFORMATION CONTAINED IN THIS DRAWING IS THE SOLE
PROPERTY OF L-COM, INC. ANY REPRODUCTION IN PART OR WHOLE
WITHOUT THE WRITTEN PERMISSION OF L-COM, INC. IS PROHIBITED.

REVISIONS			
REV	DESCRIPTION	DATE	APPROVED
A	INITIAL RELEASE	8/12/11	D.GRIFFIN



NOTES:

1. MATERIAL: BLACK RUBBER
2. COMPONENT SHALL BE PACKAGED 10 PER BAG IN ACCORDANCE WITH L-COM SPEC. PS-0031

UNLESS OTHERWISE SPECIFIED, DIMENSIONS ARE IN INCHES [mm] OVERALL CABLE LENGTH TOLERANCE: ≤12 [305] = +1 [25] / -0 >12 [305] ≤60 [1524] = +2 [51] / -0 >60 [1524] ≤120 [3048] = +4 [102] / -0 >120 [3048] ≤300 [7620] = +6 [152] / -0 >300 [7620] = +3% / -0% ALL OTHER DIMENSIONAL TOLERANCES: .X = ±.2 .XX = ±.02 .XXX = ±.005	APPROVALS		DATE		 45 BEECHWOOD DRIVE NORTH ANDOVER, MA 01845	
	DRAWN BY D. CASTRO		8/12/11			
	CHECKED BY D. PARHAM		8/12/11			
	APPROVED BY D. PARHAM		8/12/11			
	CONFIGURATION DETAILS OF UNDIMENSIONED FEATURES MAY VARY				CATEGORY FIBER OPTICS PRODUCT DESCRIPTION DUST CAP FIBER FC COUPLER	
	COLOR VARIATIONS MAY OCCUR					
	SIZE A					
		FSCM NO. 43321		DWG. NO. DSTCP-FC	REV. A	
		SCALE: NONE			CAD FILE: DSTCP-FC.SLDDRW	SHEET 1 OF 1